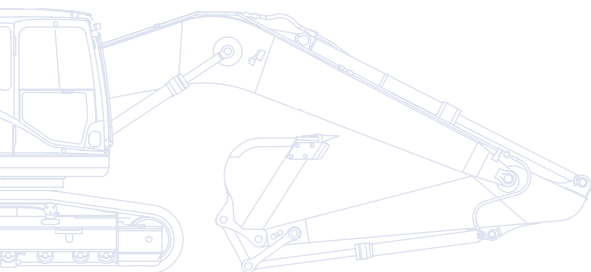


KOMATSU

PC
170LC



Hydraulic Excavator **PC170LC-10** Low Ground Pressure



ENGINE POWER
90 kW / 121 HP @ 2.100 rpm

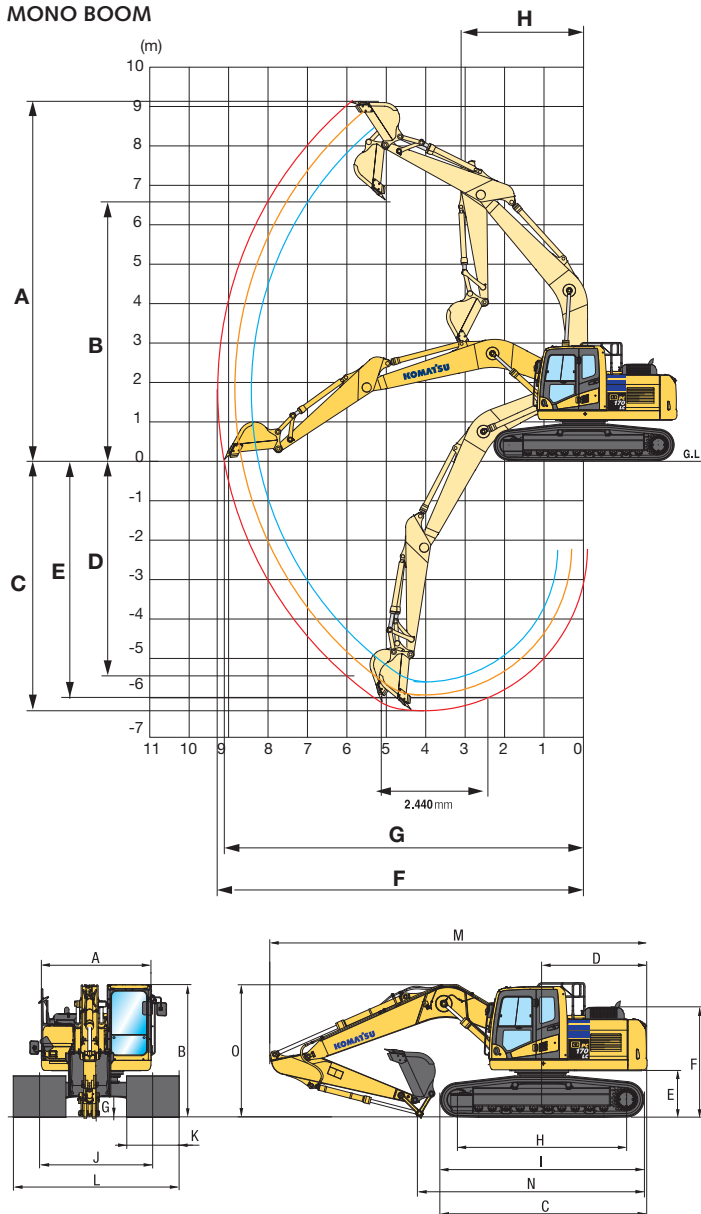
OPERATING WEIGHT
18.900 - 22.000 kg

BUCKET CAPACITY
max. 0,94 m³

Hydraulic Excavator

PC170LC-10 Low Ground Pressure

MONO BOOM



ARM LENGTH	2.250 mm	2.600 mm	2.900 mm
A Max. digging height	8.940 mm	9.010 mm	9.160 mm
B Max. dumping height	6.300 mm	6.400 mm	6.550 mm
C Max. digging depth	5.580 mm	5.930 mm	6.220 mm
D Max. vertical wall digging depth	4.830 mm	5.010 mm	5.290 mm
E Max. digging depth of cut for 2,44 m level	5.350 mm	5.710 mm	6.020 mm
F Max. digging reach	8.680 mm	8.960 mm	9.235 mm
G Max. digging reach at ground level	8.510 mm	8.800 mm	9.075 mm
H Min. swing radius	3.040 mm	2.990 mm	2.995 mm

MACHINE DIMENSIONS	MONO BOOM
A Overall width of upper structure	2.530 mm
B Overall height of cab	3.055 mm
C Overall length of basic machine	4.780 mm
D Tail length	2.470 mm
Tail swing radius	2.500 mm
E Clearance under counterweight	1.100 mm
F Machine tail height	2.550 mm
G Ground clearance	440 mm
H Tumbler centre distance	3.845 mm
I Track length	4.640 mm
J Track gauge	2.580 mm
K Track shoe width	600, 1.000, 1.200, 1.400 mm
L Overall track width with 600 mm shoe	3.180 mm
Overall track width with 1.000 mm shoe	3.580 mm
Overall track width with 1.200 mm shoe	3.780 mm
Overall track width with 1.400 mm shoe	3.980 mm

TRANSPORT DIMENSIONS	MONO BOOM		
	2,25 m	2,6 m	2,9 m
M Transport length	8.645 mm	8.645 mm	8.645 mm
N Length on ground (transport)	5.470 mm	5.100 mm	4.900 mm
O Overall height (to top of boom)	3.020 mm	3.030 mm	3.130 mm

OPERATING WEIGHT (APPR.)

	Operating weight	Ground pressure
Triple grouser shoes 600 mm	18.900 kg	0,400 kg/cm ²
Triple grouser shoes 1.000 mm	20.600 kg	0,260 kg/cm ²
Triple grouser shoes 1.200 mm	21.200 kg	0,220 kg/cm ²
Triple grouser shoes 1.400 mm	22.000 kg	0,196 kg/cm ²

Operating weight, including mono boom, 2,6 m arm, 495 kg bucket, operator, lubricant, coolant, full fuel tank and the standard equipment.

MAX. BUCKET CAPACITY AND WEIGHT

Arm length (Mono boom)	2,25 m		2,6 m		2,9 m	
Material weight up to 1,2 t/m ³	0,94 m ³	615 kg	0,94 m ³	615 kg	0,94 m ³	615 kg
Material weight up to 1,5 t/m ³	0,75 m ³	530 kg	0,75 m ³	530 kg	0,75 m ³	530 kg
Material weight up to 1,8 t/m ³	0,60 m ³	495 kg	0,60 m ³	495 kg	0,60 m ³	495 kg

Max. capacity and weight have been calculated according to ISO 10567:2007.

Please consult with your distributor for the correct selection of buckets and attachments to suit the application.