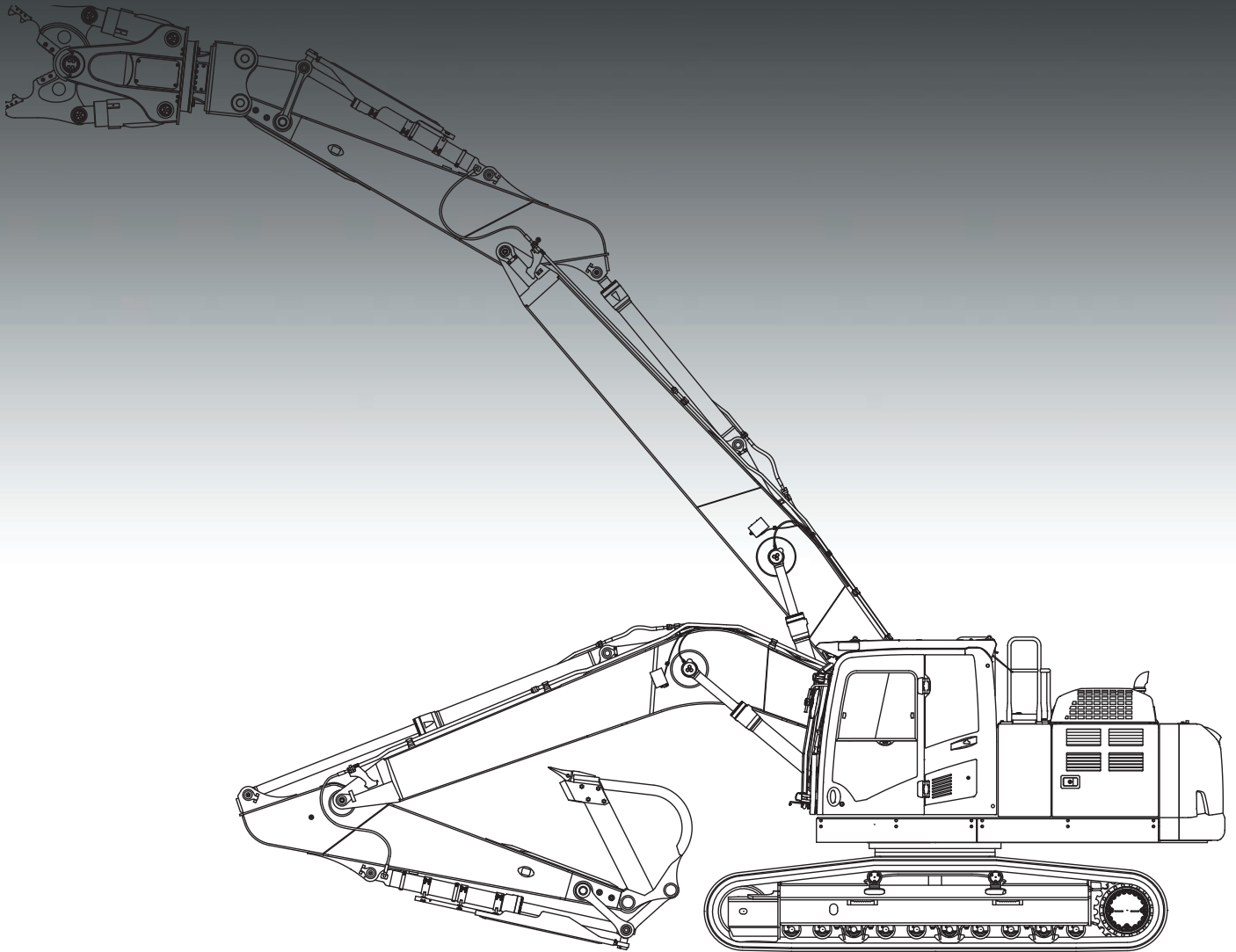


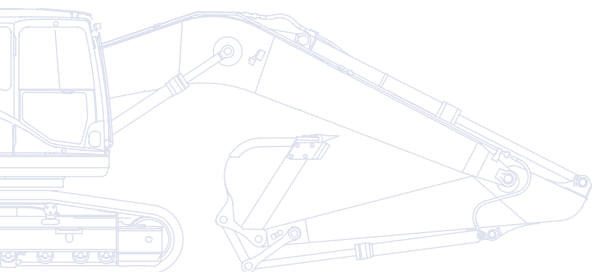
KOMATSU



Demolition Excavators

PC360LC/NLC-10

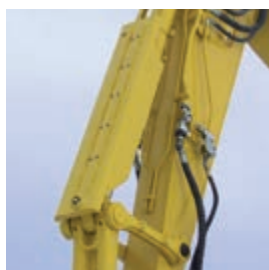
Mono Boom / Straight Boom



ENGINE POWER
202 kW / 271 HP @ 1.950 rpm

OPERATING WEIGHT
36.325 - 36.660 kg

Walk-Around



Work equipment

- Straight boom or mono boom options are available, with a variety of arm lengths, allowing the machine to be set for most working configurations
- Two additional hydraulic circuits piped with steel tubing to the end of the arm, suitable for demolition attachments

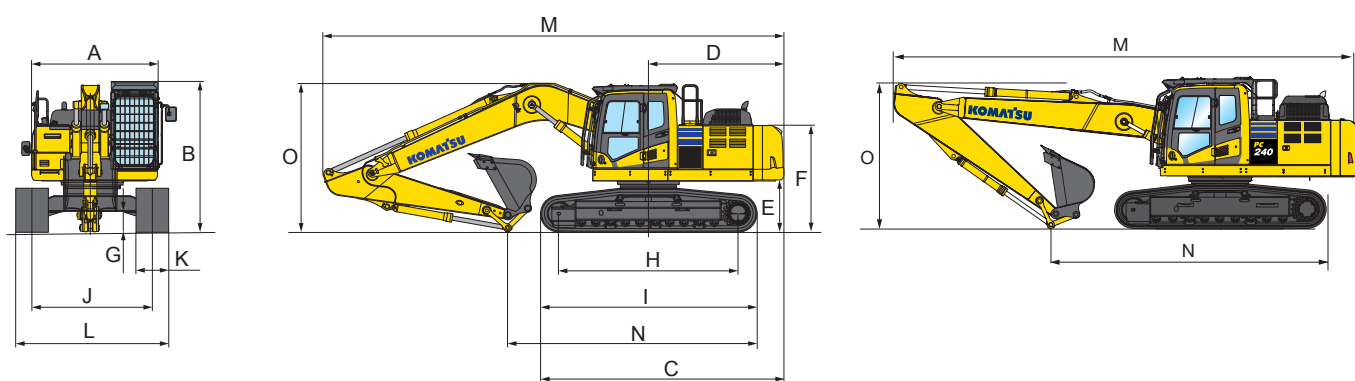
Heavy duty protection

- Heavy duty undercovers (9 mm) fitted to the upper structure offer enhanced resistance to damage from debris on the ground
- Extra heavy duty side protection (15 mm) fitted to each side of the upper structure; bolted on, offering protection from debris on the ground or side impact
- Attachment cylinder guard (optional)
- Reinforced bucket linkage
- Boom lamp protection guard
- Full length track roller guards (optional)
- Additional camera, right side mounted (optional)

Safety equipment

- Special Demolition Safety SpaceCab™ operator cabin (ROPS compliant with ISO 12117-2:2008)
- ISO 10262 Level 2 certified FOPS (Falling Object Protection System)
- Hinged front guard to allow easy access for windscreen cleaning
- Laminated glass roof window with wash wipe system
- Pressurised cabin helps to keep dust out. Climate control fitted as standard
- Joysticks with proportional control button for attachments
- Up to 5 different attachments can be pre set and named (5 breaker settings also available)

Dimensions & Specifications



MACHINE DIMENSIONS

| | MONO BOOM | | STRAIGHT BOOM | |
|---|-------------|-------------|---------------|-------------|
| | PC360LC-10 | PC360NLC-10 | PC360LC-10 | PC360NLC-10 |
| A Overall width of upper structure | 3.290 mm | 2.990 mm | 3.290 mm | 2.990 mm |
| B Overall height of cab (including OPG) | 3.370 mm | 3.370 mm | 3.370 mm | 3.370 mm |
| C Overall length of basic machine | 5.885 mm | 5.885 mm | 5.885 mm | 5.885 mm |
| D Tail length | 3.405 mm | 3.405 mm | 3.405 mm | 3.405 mm |
| Tail swing radius | 3.445 mm | 3.445 mm | 3.445 mm | 3.445 mm |
| E Clearance under counterweight | 1.185 mm | 1.185 mm | 1.185 mm | 1.185 mm |
| F Machine tail height | 2.360 mm | 2.360 mm | 2.360 mm | 2.360 mm |
| G Ground clearance | 500 mm | 500 mm | 500 mm | 500 mm |
| H Tumbler centre distance | 4.030 mm | 4.030 mm | 4.030 mm | 4.030 mm |
| I Track length | 4.955 mm | 4.955 mm | 4.955 mm | 4.955 mm |
| J Track gauge | 2.590 mm | 2.390 mm | 2.590 mm | 2.390 mm |
| K Track shoe width | 600, 700 mm | 600, 700 mm | 600, 700 mm | 600, 700 mm |
| L Overall track width with 600 mm shoe | 3.190 mm | 2.990 mm | 3.190 mm | 2.990 mm |
| Overall track width with 700 mm shoe | 3.290 mm | 3.090 mm | 3.290 mm | 3.090 mm |

TRANSPORT DIMENSIONS

| | MONO BOOM | | STRAIGHT BOOM | |
|-----------------------------------|------------|-------------|---------------|-------------|
| | PC360LC-10 | PC360NLC-10 | PC360LC-10 | PC360NLC-10 |
| Arm length | 2,6 m | 3,2 m | 2,6 m | 3,2 m |
| M Transport length | 11.180 mm | 11.140 mm | 11.425 mm | 11.320 mm |
| N Length on ground (transport) | 6.760 mm | 5.930 mm | 7.965 mm | 7.045 mm |
| O Overall height (to top of boom) | 3.410 mm | 3.280 mm | 2.885 mm | 3.095 mm |

OPERATING WEIGHT (APPR.)

PC360LC-10

| | MONO BOOM | | STRAIGHT BOOM | |
|----------------------|------------------|-------------------------|------------------|-------------------------|
| | Operating weight | Ground pressure | Operating weight | Ground pressure |
| Triple grouser shoes | | | | |
| 600 mm | 36.325 kg | 0,70 kg/cm ² | 36.390 kg | 0,70 kg/cm ² |
| 700 mm | 36.705 kg | 0,60 kg/cm ² | 36.770 kg | 0,61 kg/cm ² |

OPERATING WEIGHT (APPR.)

PC360NLC-10

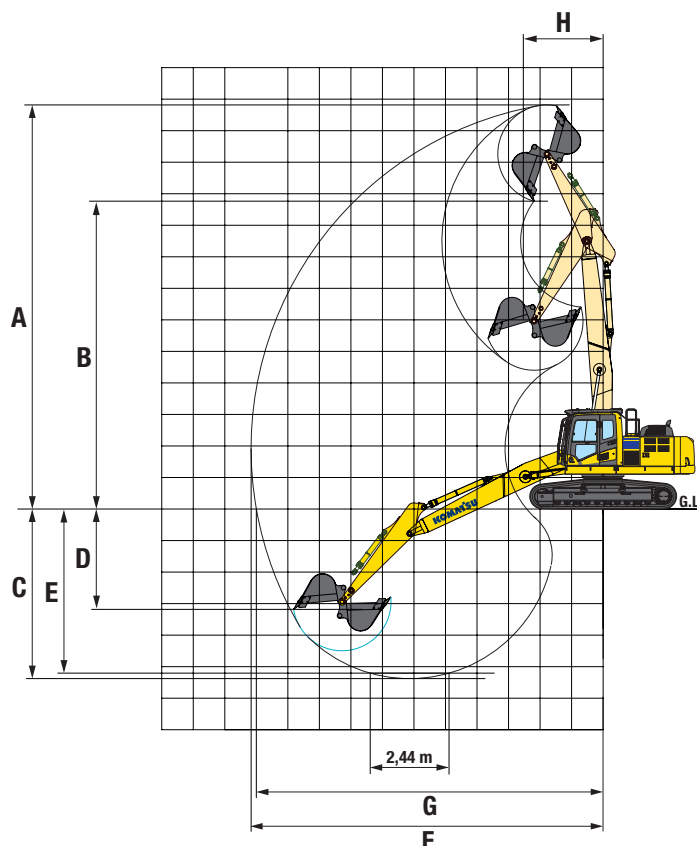
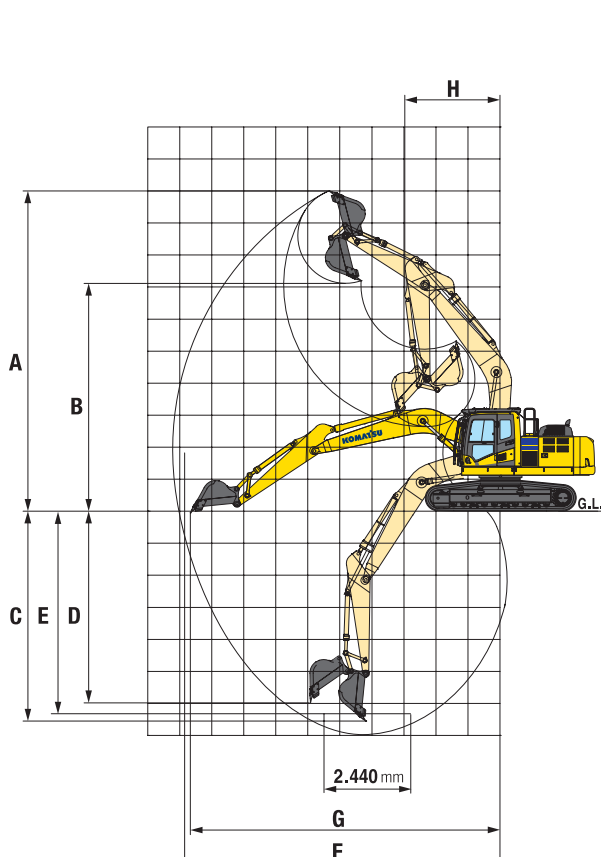
| | MONO BOOM | | STRAIGHT BOOM | |
|----------------------|------------------|-------------------------|------------------|-------------------------|
| | Operating weight | Ground pressure | Operating weight | Ground pressure |
| Triple grouser shoes | | | | |
| 600 mm | 36.215 kg | 0,70 kg/cm ² | 36.280 kg | 0,70 kg/cm ² |
| 700 mm | 36.595 kg | 0,60 kg/cm ² | 36.660 kg | 0,60 kg/cm ² |

Operating weight, including specified work equipment, 3,2 m arm, 1.650 kg bucket, operator, lubricant, coolant, full fuel tank.

PC360LC/NLC-10

Mono Boom / Straight Boom

WORKING RANGE



| PC360LC/NLC-10 | | MONO BOOM | | STRAIGHT BOOM | |
|----------------|--|-----------|-----------|---------------|-----------|
| Arm length | | 2,6 m | 3,2 m | 2,6 m | 3,2 m |
| A | Max. digging height | 9.965 mm | 10.210 mm | 12.470 mm | 13.170 mm |
| B | Max. dumping height | 6.895 mm | 7.110 mm | 9.105 mm | 9.805 mm |
| C | Max. digging depth | 6.705 mm | 7.380 mm | 5.375 mm | 6.075 mm |
| D | Max. vertical wall digging depth | 5.880 mm | 6.480 mm | 4.460 mm | 5.398 mm |
| E | Max. digging depth of cut for 2,44 m level | 6.520 mm | 7.180 mm | 5.193 mm | 5.922 mm |
| F | Max. digging reach | 10.550 mm | 11.100 mm | 11.172 mm | 11.900 mm |
| G | Max. digging reach at ground level | 10.355 mm | 10.920 mm | 10.985 mm | 11.725 mm |
| H | Min. swing radius | 4.400 mm | 4.310 mm | 3.530 mm | 3.000 mm |

Specifications: Engine power at rated engine speed (1.950 rpm): 202 kW/271 HP (ISO 14396). Engine emissions fully complies with EU Stage IIIB exhaust emission regulations. Noise levels: LwA external: 105 dB(A) (2000/14/EC Stage II). LpA operator ear: 71 dB(A) (ISO 6396 dynamic test. Vibration levels (EN 12096:1997): Hand/arm: 2,5 m/s² (uncertainty K = 0,37 m/s²). Body: 0,5 m/s² (uncertainty K = 0,17 m/s²). Contains fluorinated greenhouse gas HFC-134a (GWP 1430). Quantity of gas 0,8 kg, CO₂ equivalent 1,14 t.